



Mwanza University Prospectus

ACADEMIC YEAR 2023-2024

TABLE OF CONTENTS

A WORD FROM THE CHANCELLOR	1
GREETINGS FROM THE VICE CHANCELLOR	2
A WORD FROM THE CHAIRMAN (COUNCIL)	3
A CONGRATULATORY NOTE FROM THE DEPUTY VICE CHANCELLOR– ACADEMIC, RESEARCH AND CONSULTANCY (DVC–ARC)	4
WELCOMING NOTE FROM THE DEPUTY VICE CHANCELLOR–PLANNING, FINANCE AND ADMINISTRATION (DVC–PFA)	4
SENIOR OFFICERS OF MWANZA UNIVERSITY	5
1. ABOUT MWANZA UNIVERSITY	6
1.1 Location	6
1.2 Vision	6
1.3 Mission	6
1.4 Motto/Philosophy	6
1.6 Objectives of Mwanza University	7
1.7 Organisation Structure	7
1.7.1 The University Council	7
1.7.2 University Senate	8
1.7.3 Executive Offices	8
2. MINIMUM ENTRY REQUIREMENTS FOR THE DOCTOR OF MEDICINE PROGRAMME	10
3. ADMISSION REGULATIONS	11
3.1 Regulations Governing Selected Candidates	11
3.2 Mode of Application	11
4. FEES STRUCTURE	12
5. DOCTOR OF MEDICINE (MD) PROGRAMME	15
5.1 Programme Description	15
5.2 Programme Objectives and Learning Outcomes	15
5.2.1 Programme Objectives	15
5.2.2 Programme Learning Outcomes	15
5.3 Programme Structure	16
5.3.1 Programme Delivery	16
5.3.2 Regulations for the Semester/Course-Credit System	16
6. ACADEMIC STAFF	21

7. LIFE AND FACILITIES AT THE UNIVERSITY	25
7.1 Accommodation	25
7.2 Religious Life	25
7.3 Cafeteria Services	25
7.4 Sports and Recreation	25
7.5 Students Administration, Welfare and Discipline	25
8. THE UNIVERSITY LIBRARY	27
8.1 The Library Opening Hours	27
8.2 Electronic Library Materials	27
9. ACADEMIC CALENDAR	28

ACRONYMS

HSW	Head of Students Welfare
AD & SMD	Administration and Students Database Management
A & R	Admission and Registration
CLT	Class and Laboratory Teaching
CR	Clinical Rotation
DVC–ARC	Deputy Vice Chancellor–Academic, Research and Consultancy
DVC–PFA	Deputy Vice Chancellor–Planning, Finance and Administration
DVC–HS	Deputy Vice Chancellor–Hospital Services
E & C	Examination and Certification
EW	Estates and Works
HFP	Head of Finance and Planning
GPA	Grade Point Average
HELSB	Higher Education Students’ Loans Board
MzU	Mwanza University
TIHEST	Tandabui Institute of Health Sciences and Technology
HR & AD	Human Resource and Administration
IAHS	Institute of Allied Health Sciences
ICE	Institute of Continuing Education
LODL	Library and Open Distance eLearning
PRO	Public Relations Officer
QAO	Quality Assurance Officer
SARIS	Students’ Academic Record Information System
SA	Students Affairs
SDM	Students Database Management
SMAHS	School of Medicine and Allied Health Sciences
STY	Security
TRP	Transportation
T & P	Teaching and Placement
VC	Vice Chancellor



A WORD FROM THE CHANCELLOR

Heartfelt congratulations upon your enrolment at Mwanza University. Where darkness prevails, life is the shipwreck about to sink. Realising this is paramount for everyone to take part in illuminating the world through quality training, research and community service. These, I am informed are your core functions, similar to all other Institutions of Higher Learning in the country. For such a noble mission to be achieved, this University owes its existence to becoming a centre for training and illuminating the whole world just like a city on the hill.

The Mwanza University is established to bring a significant impact on the higher learning education landscape nationally, regionally and internationally at large, thereby training students from diverse socioeconomic, as well as cultural backgrounds.

We are committed to influence students with the love for learning, the hunger for discovery, the passion for creativity, and the burning desire to make the world a better place.

The University provides friendly environments for students to pursue their dreams based on their aspirations. Learning processes inside and outside classrooms take place in an attractive and peaceful environment ideal for everyone. They are virtually self-sufficient in terms of key services such as libraries, laboratories, playgrounds, hostels, lecture theatres, cafeterias and health facilities. It is a safe and secure place that assures the learning goal is appropriately actualised.

Now that I welcome you as First-Year students, I look forward to seeing that our core values are effectively and efficiently observed and respected. I therefore urge you to intently focus on studies while remaining vigilant on what is taking place elsewhere in the world and being foresighted about what lies ahead of this fast-changing world. I admonish you above all to be creative and innovative so that your vision may be realised.

Honourable Anne S. Makinda
Chancellor, Mwanza University
2023



GREETINGS FROM THE VICE CHANCELLOR

A warm welcome to Mwanza University (MzU). I am delighted to see that you have made the right choice to make Mwanza University your University of choice to undertake your studies and achieve your dreams.

Mwanza University is set to pioneer the provision of innovative training aimed at eliciting your critical thinking and problem-solving skills, which are key tools to enter the job market. We have planned in such a way that our training shall be skills and competence-oriented to allow you to develop and nurture your naturally bestowed skills that enable you to reach where you are today. This is an opening to a new page of your life towards becoming a highly motivated person in the provision of high-quality professional skills locally,

regionally and internationally.

Our major objective is to provide quality training and support you to become critical thinkers and problem solvers so that you can face with confidence the dynamics of the constant changing world. We look forward to provide for you the best possible environments to become active learners, with agility to conduct research to constantly improve as you travel your path to your dream.

This prospectus provides you with an abstract of undergraduate academic programme(s) offered by the University as well as key information that is intended to guide prospective and registered students of the Mwanza University. It outlines the programme(s) and explains the eligibility criteria to study at the University, examination rules and regulations and other special academic requirements.

It is my hope that you will find this prospectus helpful and useful. In case you cannot find what you are looking for, please do not hesitate to contact us through the contacts provided for further assistance.

Once again, I warmly welcome you all to Mwanza University and I look forward to providing support to you in your academic endeavours towards the realisation of your academic and professional goals.

Prof. Flora M. Fabian
Vice Chancellor, Mwanza University
2023



A WORD FROM THE CHAIRMAN (COUNCIL)

Welcome to Mwanza University. I am so much excited upon seeing your interest to be a part of our community, a place where your expectations intercept the excellence to yield the qualified professionals who will bring transformation and wellbeing to our societies, nations and the world at large.

Being a member of the Mwanza University means taking a vow to join the race for changes that will make the world a better place by offering the best of your gifts, careers, skills, professions and expertise to ensure the greater impact for humanity.

Our programmes are designed in a way that will make learning an enjoyable and meaningful adventure while helping our students to develop their skills that will be useful and marketable enough to overcome the upcoming challenges in their career.

I believe that this journey will be foundational and memorable, and your years of studying will influence you and your world around thereby bringing you to your prescribed end.

Once again, I take pleasure in welcoming you to Mwanza University, the home of quality education with the touch of excellence.

Dr. Charles Sokile

Chairman, Mwanza University Council

2023

A CONGRATULATORY NOTE FROM THE DEPUTY VICE CHANCELLOR– ACADEMIC, RESEARCH AND CONSULTANCY (DVC–ARC)

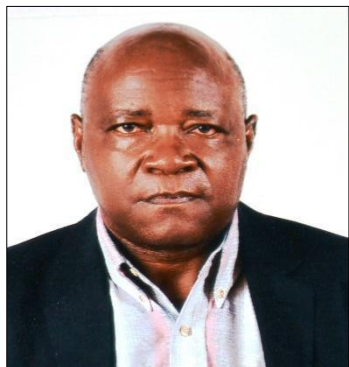


Congratulations for being selected to pursue medical studies at Mwanza University. You have really made a wise choice. This Prospectus describes the range of courses and activities at this University, which will give you a wide scope of Campus life. Mwanza University is unique in its ability to offer students both face-to-face and online courses using smart technology. I am sure you will like this novel and innovative approach to learning.

The University aims at providing the best possible environment for teaching, learning, research and public service, thereby attesting to the importance of our Vision and Mission. Since the quality of students' experience does not only come from academic studies, but also from extracurricular activities, you are encouraged to engage in the activities of the Students Union, and exploit the various sports and recreational opportunities! After all, the ancient Roman proverb "*A healthy mind in a healthy body*" still holds well even in the modern world. "*Exercise helps us to keep fit and at the same time maintain an alert mind*".

Once again, I warmly welcome and congratulate you for joining Mwanza University, and look forward to working with you towards achieving your academic ambition.

WELCOMING NOTE FROM THE DEPUTY VICE CHANCELLOR–PLANNING, FINANCE AND ADMINISTRATION (DVC–PFA)



Welcome to Mwanza University, the youngest member of the University fraternity in Tanzania. I am pleased that you have shown interest to study at this University and I sincerely hope that your expectations will be handsomely rewarded. Rest assured that you will find both Mwanza life and the University neighbourhood friendly and conducive for academic life and thus, realising your treasured ambition of becoming a medical doctor. However, like all facets of life, academic life is not without challenges: these are freedom, money and peer pressure. Thus, be very wise on how you express your newly found freedom; learn how to budget and spend your scarce money within the budget; and, finally, learn how to develop and cherish relationships, which serve as a springboard for success, not failure. In other words, steer clear from developing relationships, which compromise your core business at MzU – medical studies.

With those few words, I once again welcome you "aboard" Mwanza University.

WELCOME NOTE FROM THE DEAN, SCHOOL OF MEDICINE AND ALLIED HEALTH SCIENCES (DSMAHS)



Welcome to MzU, a University of choice where as an incoming student, you will acquire quality education that will provide you with knowledge,

professional attitudes and skills to fit a world class medical doctor graduate who will work not only in Tanzania but in the region and elsewhere.

SENIOR OFFICERS OF MWANZA UNIVERSITY

Chancellor

Honourable Anne S. Makinda (Former Speaker of the National Assembly of Tanzania)

Mwanza University Council Chairman

Dr. Charles Sokile

Vice Chancellor

Prof. Flora M. Fabian, DDS (UDSM), PhD Anat. (Tokyo Medical & Dental University)

Deputy Vice Chancellor–Academic, Research and Consultancy (DVC–ARC)

Prof. Pontien Ndabaneze, BSc. Botany (Catholic University Louvain, Belgium), PhD Botany (University of Liege, Belgium)

Deputy Vice Chancellor–Planning, Finance and Administration (DVC–PFA)

Prof. Jonathan L. Kabigumila, B.Sc., MSc, PhD Zoology (UDSM)

Dean, School of Medicine and Allied Health Sciences

Prof. Felix N. Kisanga, MD (UDSM), MSc Trop. Dis. Cont. (MUHAS), MPH (Antwerpen), PhD Pub. Heal. (Umea University)

1. ABOUT MWANZA UNIVERSITY

Mwanza University (MzU) is a Private University formally established in 2021 following granting of Provisional Licence by the Tanzania Commission for Universities (TCU) on 30th June 2021. The University is an innovation of the Board of Directors of the Kingdom Business Company Limited (KBLC), established to further social services for the common good of humanity, alongside other company social enterprises, namely Tandabui Institute of Health Sciences and Technology (TIHEST) and Mwananchi Hospital. Mwanza University is building on the long-term reputation and experience of the owners in managing healthcare and training enterprises.

1.1 Location

Mwanza University is located 14 km from Mwanza City, along the Musoma-Mwanza Highway at Nyamhongolo (Plot No. 1 Block C), Mbugani Street, Kishiri Ward, Tanzania.

1.2 Vision

The vision of MzU is “To become a World class university of choice through teaching, research, innovation and services”. The key attributes of a “world-class” university are qualified staff, academically gifted and successful students, excellence in research, quality teaching at international standards, sustainable funding, and well-equipped facilities.

1.3 Mission

The mission of MzU is “ To deliver education in a customised blended mode that guarantees a learning style supporting students to study at ease and with fun, making it accessible and useful to all students studying at Mwanza University and its collaborating institutions. The final product is graduates who are a valuable contribution as citizens of the global society”.

1.4 Motto/Philosophy

The motto or philosophy of MzU is “Mwanza University: Training for the World”.

1.5 Core Values

Six core values guide the University in accomplishing its vision, mission, and objectives and functions:

- a) Effective governance – The University will adopt a leadership style, which is participatory, consensus-oriented, accountable, transparent, responsive, efficient, equitable and inclusive, and follows the rule of law.
- b) Moral standards and integrity – The University will uphold and ensure accuracy, professional ethics, honesty, corporate social responsibility and human respect in pursuit of its functions.
- c) Transparency and accountability – The University leadership will ensure openness, teamwork, participatory management and answerability in decision-making and implementation of all MzU activities.
- d) Innovation and partnerships – In performing its core functions, the University will aim to be creative, cherish novelty and work closely with its stakeholders, including students, staff, government and private institutions, NGOs, civil-society groups, service providers, development partners, and other Universities, both local and international.

- e) Client satisfaction – In performing its core functions, the University will provide customers with adequate information, be transparent, use professional and friendly staff, and offer high-quality services.
- f) Equity and safeguarding – This University is an equal-opportunity institution committed to protecting vulnerable groups.

1.6 Objectives of Mwanza University

The general objective of MzU is to advance knowledge, wisdom and understanding through teaching, research, extension and consultancy. By example and influence of its corporate life, and subject to the provisions of the Charter and any other applicable written law, MzU has the following specific objectives:

- a) To provide resources for education, training, research and community service;
- b) To conduct research and consultancy;
- c) To preserve, process, transmit and disseminate relevant knowledge and skills;
- d) To prepare students to work with stakeholders in Tanzania, the region and worldwide to touch lives, encourage others, motivate individuals, and finally making the world a better place to live;
- e) To develop, promote and undertake the provision of adult, continuing education and open distance learning;
- f) To cooperate with national, regional and international institutions in the initiation and conduct of cooperative research and training programmes for the mutual benefit of the cooperating institutions and Tanzania;
- g) To mainstream gender issues and equal opportunities in all University programmes and activities to enhance equity and productivity; and
- h) To safeguard and protect intellectual property rights on innovations and inventions emerging from the efforts of the University in executing its mandate.

1.7 University Organs and Organisational Structure

1.7.1 The University Council

The University Council is the governing body and principal policy-making organ of the University. Its composition represents a cross-section of individuals interested in promoting higher education. Members of the University Council are:

1. Dr. Charles Sokile (Chairman)
2. Mr. Shaibu Chanzi (Secretary to Council)
3. Dr. Danford Muyango (Member)
4. Ms. Dolorosa D. Gitagno (Member)
5. Adv. Flaviana Charles (Member)
6. Mrs. Rose Pendaali (Member)
7. Prof. Eligius Lyamuya (Member)
8. Dr. Leonard Maboko (Member)
9. Dr. Lukas Shallua (Member)
10. Mr. Heri Bomani (Member)
11. Students' Representative (Vacant)
12. Workers' Association Representative (Vacant)
13. Prof. Fabian Flora (Vice Chancellor – Ex Officio)
14. Prof. Pontien Ndabaneze ((DVC-ARC – Ex Officio)
15. Prof. Felix N. Kisanga (Dean, SMAHS – Ex Officio)

16. Prof. Jonathan L. Kabigumila (DVC-PFA – Ex Officio)
17. Ms Natujwa S. Nsemwa (Representative of Board of Directors)

1.7.2 University Senate

The University has a Senate, which is the principal overall decision-making organ on all core functions of the University, namely Academic matters (teaching, research, and public service). The Senate is chaired by the Vice Chancellor.

1.7.3 Executive Offices

The organisation structure of the University comprises the Central Administration and one School, with 13 Academic Departments (Anatomy & Histology; Biochemistry & Molecular Biology; Physiology; Pathology; Clinical Pharmacology; Microbiology & Immunology; Parasitology & Entomology; Behavioral Sciences & Public Health; Communication Skills & ICT; Internal Medicine & Psychiatry; Obstetrics & Gynaecology; Paediatrics & Child Health; and Surgery & Surgical Specialties). Although the Central Administration and its various Departments is responsible for strategic decision-making and policy issues, the School handles all Academic and Administrative matters from the Academic Departments.

1.7.4 University Organogram

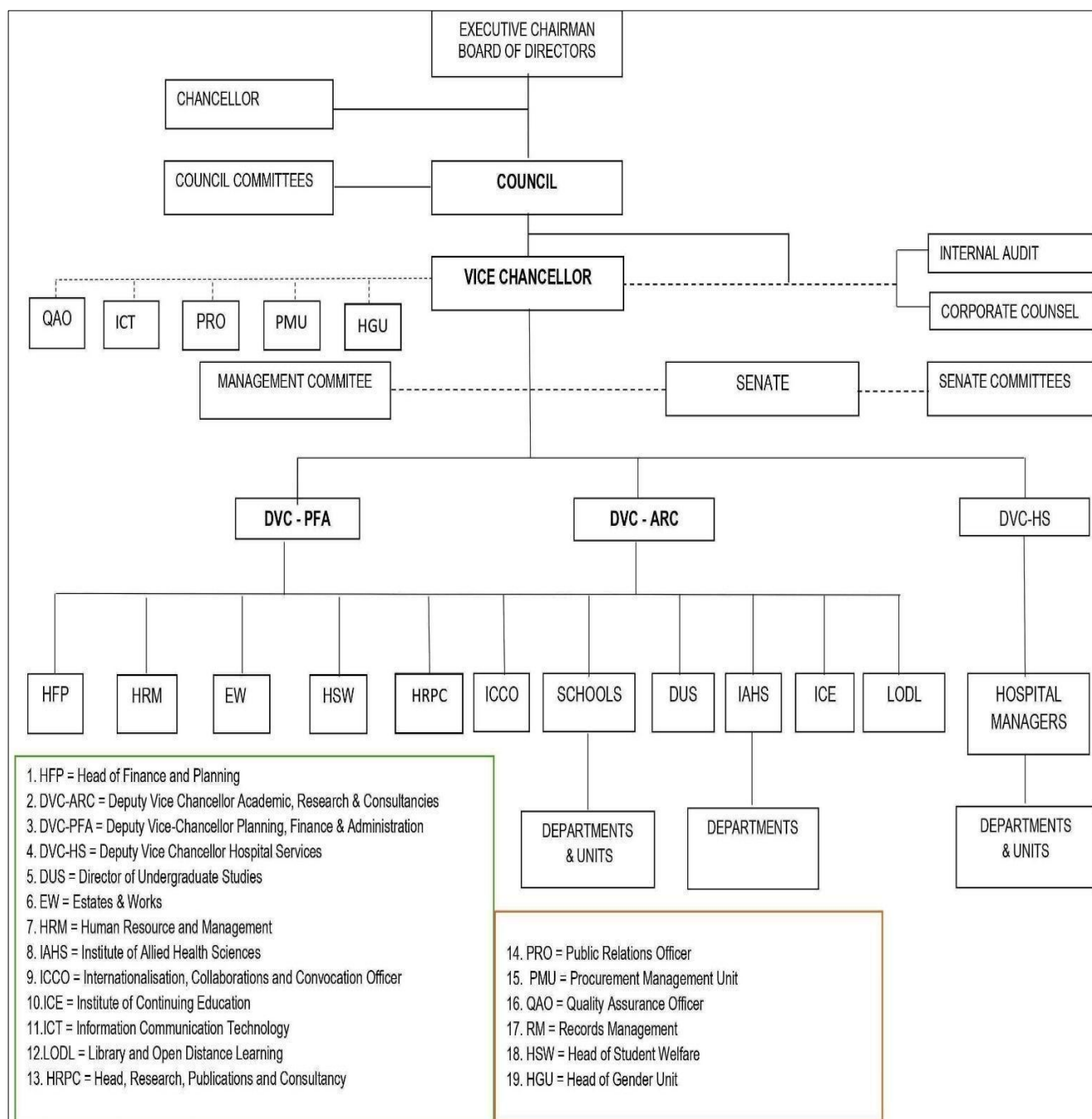


Fig. 1.1: Organogram of Mwanza University

2. MINIMUM ENTRY REQUIREMENTS FOR THE DOCTOR OF MEDICINE PROGRAMME

The Minimum Entry Requirements into the MD Programme are as follows:

a) Applicants with A- Level Qualifications (Direct Entry)

(i) Applicants who completed Form 6 or its equivalent having three principal passes with at least a D grade and a minimum of 6 points in Chemistry, Biology and Physics.

b) Applicants with Equivalent Qualifications

(i) Holders of Certificate of Secondary Examination Education (CSEE) with at least five passes including two credits in Biology and Chemistry and D grade in Physics.

(ii) Diploma in Clinical Medicine with an average of B+ or GPA of 3..

(iii) Holders of BSc Degree (Lower Second or above) who have majored in Physics/Mathematics, Chemistry, and Biology/Zoology.

N.B.: Foreign applicants must first verify their certificates with NECTA, and diploma applicants must verify their certificates with NACTE before initiating the application process.

2.2 Mode of application

Applicants for the MD Programme are required to apply directly to the University through an online application portal available at: www.apply.mwanzauniversity.ac.tz with a non- refundable application fee of TZS 50,000 (or USD 50 for international students).

All applications are processed through the online admission system of Mwanza University. Application procedures can be accessed online through the website at www.mwanzauniversity.ac.tz.

3. ADMISSION REGULATIONS

3.1 Regulations Governing Selected Candidates

Candidates selected for admission must observe the following regulations:

- i) All registered students are expected to conform to the University regulations.
- ii) All foreign students are required to apply for Study Visa and Permit Class C from their nearest Tanzanian Embassy before they depart for Tanzania.
- iii) Students who have been selected but cannot join the University for any reason may postpone studies to the next Academic Year as long as they are fully registered.
- iv) The deadline for registration of first year students is two weeks from the date set for reporting to the University.
- v) New students are required to submit for registration the following: original Certificate of Secondary Education Examination (CSEE), Advanced Certificate of Secondary Education Examination (ACSEE) or Diploma Certificates, two current passport size photographs bearing the student's name and course of study at the back and original Birth Certificate.
- vi) No changes of names by students will be entertained during the course of the study at the University. Students will only be allowed to use names appearing on their certificates.
- vii) No student will be allowed to postpone studies after effective commencement of an academic year except under special circumstances. Permission to postpone studies will be considered after producing satisfactory evidence of the reasons for postponement and written approval from the sponsor. Special circumstances shall include:
 - a) Sickness (approved by Head of Students Welfare and recognised Medical Officer In-charge)
 - b) Serious social problems (each case to be considered on its own merit)
 - c) Severe sponsorship problem.

3.2 Mode of Application

Applicants for the MD Programme are required to apply directly to the University through an online application portal available at: www.apply.mwanzauniversity.ac.tz with a non-refundable application fee of TZS 50,000 or USD 50 (for international students).

All applications are processed through the online admission system of Mwanza University. Application procedures can be accessed online through the website at www.mwanzauniversity.ac.tz.

3.3 Payment Process

- During the application process, an applicant will receive a control number, which he/she will use to pay the application fee.
- After being selected for admission at Mwanza University, an applicant will receive an admission letter, which he/she can download from MzU website. The applicant will be required to confirm his/her placement at Mwanza University within **one week** of being selected for admission.
- After confirmation, the applicant will automatically receive a control number, which he/she will use to make fee payments.

4. FEES STRUCTURE

Candidates selected to pursue the MD Programme offered by this University are required to pay tuition and other University fees by the beginning of each semester before they can be permitted to use University facilities. Fees once paid are non-refundable. Note also that the University reserves the right to revise fees as may be appropriate.

The tuition fees for both local and international students are indicated in Table 4.1.

Table 4.1: Fees for Local and International Students.

A. Doctor of Medicine Tuition Fee				
Academic Programme	Semester Tuition (TZS)	Semester Tuition For International Students (USD)	Annual Tuition (TZS)	Annual Tuition International Students (USD)
Doctor of Medicine Degree (MD)	3,340,000	1925.00	6,680,000	3850.00
B. Other Fees Payable Once to the University				
Item	Amount (TZS)	Amount (USD)	Details	
Identity card	10000	5.00	Paid Once By First Years	
Graduation	100000	50.00	Paid Once By Graduates	
Total	110000	55.00		
C. Other Fees Payable Every Year to the University (Administrative)				
Item	Amount (TZS)	Amount (USD) International Students	Details	
Registration Fee	200,000	90.00	Paid Per Year	
Development	210,000	100.00	Paid Per Year	

TCU Quality assurance	20,000	10.00	Paid Per Year
Life & financial skills Development fee	245,000	110.00	Paid Per Year
Student Union membership fee	20,000	10.00	Paid Per Year
Library Membership fee	20,000	10.00	Paid Per Year
Total	715,000	330.00	
D. Other Fees Payable Every Semester to the University (Administrative)			
Item	Amount (TZS)	Amount (USD) International Students	Details
E-learning resources and ICT Services	297,500	130.00	Paid Per Semester
Examination	195,000	85.00	Paid Per Semester
Total	492,500	215.00	

I) First Year

ITEM DESCRIPTION	COST (TZS)	COST (USD)
Scientific Calculator	55,000	30.00
Dissection Kit	50,000	30.00
Lab Coats (2)	100,000	50.00
Total	205,000	110.00

ii) Second Year

ITEM DESCRIPTION	COST (TZS)	COST (USD)
Stethoscope (Clinical)	295,000	130.00
BP Machine	180,000	100.00
Clinical Thermometer (digital)	10,000	10.00
Clinical Thermometer (manual)	5,000	05.00
Tape measure (Metric)	5,000	05.00
Total	495,000	250.00

iii) Third - Fifth Year

ITEM DESCRIPTION	COST (TZS)	COST (USD)
------------------	------------	------------

Apron (2)	70,000	30.00
Theatre Shoes/Boots (1 pair)	100,000	50.00
Clinical Lab Coats	100,000	50.00
Neurological Examination Set	500,000	220.00
Otoscope/Ophthalmoscope	300,000	130.00
Fetoscope	40,000	20.00
Theatre Clothes (Gowns)	80,000	40.00
Delivery Kit	550,000	240.00
Total	1,740,000	780.00

iv) Transport During Clinical Rotations

MD4 & MD5	COST (TZS)	COST (USD)
Annually	200,000	100.00

F. MONEY PAYABLE TO STUDENT TO COVER LIVING EXPENSES, ACCOMMODATION, FIELD WORK AND RESEARCH

1. Living Expenses

ITEM DESCRIPTION	COST (TZS)	COST (USD)
National Health Insurance Fee (NHIF)	50400	30.00
Meals and accommodation (per semester)	2,100,000	1000. 00
Book purchase (per set)	1,000,000	500.0 0
Pocket money (per semester)	700,000	350.0 0
Stationery (per semester)	400,000	200.0 0
Total	4,250,400	2,080. 00

2. Fieldwork

ITEM DESCRIPTION	COST (TZS)	COST (USD)
MD 2 (Family case study)	200,000	100.00

MD 4	1,000,000	500.00
MD 5	600,000	300.00
Total	1,800,000	900.00

3. Additional Costs for International Students

Item	USD
Residence Permit and visa	250.00
Settlement cost	300.00

NOTE: The fees indicated above are subject to change without prior notice. All Payments should be made through the following Bank Accounts:

ACCOUNT NAME: MWANZA UNIVERSITY

ACCOUNT NO: 0150604153201 (FOR TZS)

ACCOUNT NO: 0150604153201 (FOR USD)

BANK NAME: CRDB BANK PLC

SWIFT CODE: CORUTZTZ

5. DOCTOR OF MEDICINE (MD) PROGRAMME

5.1 Programme Description

Doctor of Medicine is a full-time five-year, ten-semester competency-based programme, leading to the award of MD degree of this University followed by a year's internship at an approved hospital. All courses in the Programme have core status, implying that every student must register and pass all the courses; there is no room for electives. The first four semesters are largely devoted to basic sciences and introduction to clinical medicine, but also fieldwork and community training. The next six semesters are mainly practical and comprise junior and senior clerkships as well as community health training.

The University's MD Programme is current with respect to national, regional and international socioeconomic dynamics and adheres to national, regional and international quality standards and relevance. Moreover, the Programme complies with TCU and/or IUCEA provisions and benchmarks, which require well-formulated learning outcomes that are benchmarked against level descriptors indicated in the University Qualifications Framework (UQF) or regional qualifications frameworks for EAC and SADC.

5.2 Programme Objectives and Learning Outcomes

The MD Programme clearly articulates the objectives and learning outcomes in the curriculum outlined hereunder.

5.2.1 Programme Objectives

- a) To train a general duty medical doctor who has broad knowledge of common human diseases, particularly diseases endemic to the tropics.
- b) To produce medical doctors with skills and competencies, which will enable them to manage and deliver efficient preventive and curative health services, to be gender responsive, to develop entrepreneurial competencies and to create employment opportunities
- c) To develop training and research capacity of the medical doctor.
- d) To promote good ethical conduct in the practice of medicine.
- e) To develop ICT skills, which will enable medical doctors to train health practitioners of lower cadre in remote areas, both through face-to-face and virtual technologies.

5.2.2 Programme Learning Outcomes

- a) To demonstrate an understanding of normal and abnormal structure, function, development and growth of the human body and personality.
- b) To evaluate patients clinically and by laboratory investigations for reaching appropriate diagnosis.
- c) To administer correct medical and surgical interventions to the patients and refer them where appropriate.
- d) To manage healthcare services at different levels of the national health-delivery system.
- e) To identify and provide relevant preventive and curative community healthcare services according to national and community priorities.
- f) To conduct relevant training and supervision of other healthcare personnel.
- g) To conduct research and apply the findings to improve the quality of healthcare services.
- h) To keep abreast of advances in medical and healthcare fields through continuing education.

- i) To demonstrate good ethical conduct.
- j) To apply entrepreneurial skills in healthcare management practices.

5.3 Programme Structure

The courses and duration per week and semester over the five-year period are shown in Table 5.1.

5.3.1 Programme Delivery

The MD Programme will be delivered through various approaches using both face-to-face and virtual technology (online-delivery mode) for lectures, seminars, tutorials, practical/clinical sessions, and group and individual assignments.

5.3.2 Regulations for the Semester/Course-Credit System

The University runs a semester/course-credit system for the MD Programme. As in other institutions of higher learning, one (1) credit at this University is defined as 10-15 hours of theoretical learning (lecture/seminar/tutorial), or 30-45 hours of practical learning sessions/clinical rotations/fieldwork. Since the Academic Year for the MD Programme has 46 weeks of which 36 involve active teaching, a student is expected to earn 48 credits, or 24 credits per semester. Thus, a minimum of 21 credits per semester for the MD Programme is considered satisfactory.

Table 5.1: Courses, Hours per Week and per Semester for the Doctor of Medicine Programme.

N o.	Course name	Course Code	Core/elective	Lecture (Hrs)	Tutori al/ Semin ar (Hrs)	Assignment (Hrs)	Independen t Study (Hrs)	Practical (Hrs)	Total (Hrs)	Credit s
1	Anatomy/Histology and Embryology	ANT100	Core	73	11	0	0	96	180	18.0
2	Biochemistry and Molecular Biology I	BCH100	Core	90	0	4	0	58	152	15.2
3	Introduction to Community Health	CH100	Core	25	10	8	16	0	59	5.9
4	ICT and Communication Skills	CS100	Core	47	8	12	26	66	159	15.9
5	Physiology I	PHY100	Core	90	16	8	10	38	162	16.2
Total		325	45	32	45	32	52	258	712	71.2

Semester 2 – Year 1

S/ N	Course name	Course Code	Core /Electiv e	Lectur e (Hrs)	Tutorial / Seminar (Hrs)	Assignment (Hrs)	Independen t Study (Hrs)	Practi cal (Hrs)	Total (Hrs)	Credits
1	Gross Anatomy	ANT200	Core	60	17	0	0	123	200	20.0
2	Biochemistry and Molecular Biology II	BCH200	Core	126	12	0	0	60	198	19.8
3	Behavioural Sciences	BSC200	Core	62	10	6	20	0	98	9.8
4	Physiology II	PHY200	Core	76	14	8	8	20	126	12.6
5	Professionalism and Ethics in Health and Research	PR200	Core	16	9	9	8	25	67	6.7
Total				340	62	23	36	228	689	68.9

Semester 3 – Year 2

S/ N	Course Name	Course Code	Core/Elective	Lecture (Hrs)	Tutorial/ Seminar (Hrs)	Assignment (Hrs)	Independent Study (Hrs)	Practical (Hrs)	Total (Hrs)	Credits
1	Health Systems, Research and Development	HSRD300	Core	60	20	15	17	0	112	11.2
2	Microbiology and Immunology	MI300	Core	68	12	6	10	66	162	16.2
3	Pathology I	PAT300	Core	54	4	0	1	20	79	7.9
4	Parasitology and Medical Entomology	PE300	Core	56	6	10	6	32	110	11.0
5	Basic and Clinical Pharmacology	PHC300	Core	36	20	10	10	44	120	12.0

6	Professionalism and Ethics in Medical Practice	PR300	Core	16	3	3	4	41	67	6.7
7	Therapeutic Counselling	TC300	Core	36	0	10	5	36	87	8.7
Total				326	65	54	53	239	737	73.7

Semester 4 – Year 2

S/N	Course Name	Course Code	Core/Elective	Lecture (Hrs)	Tutorial / Seminar (Hrs)	Assignment (Hrs)	Independent Study (Hrs)	Practical (Hrs)	Total (Hrs)	Credits
1	Community Health Practice	CH400	Core	0	10	0	4	62	76	7.6

2	Epidemiology and Biostatistics	EB400	Core	112	26	24	20	58	240	24.0
3	Management and Entrepreneurship	ME400	Core	42	0	0	0	10	52	5.2
4	Pathology II	PAT400	Core	54	0	0	0	38	92	9.2
5	Clinical Pharmacology	PHC400	Core	32	26	11	8	30	107	10.7
6	Psychopathology	PSY400	Core	40	16	6	0	0	62	6.2
7	Research Proposal Development	RP400	Core	38	0	0	0	36	74	7.4
Total				318	78	41	32	234	703	70.3

Semester 5 – Year 3 (Clerkship)

S/ N	Course Name	Course Code	Core/Elective	Lecture (Hrs)	Tutorial / Seminar (Hrs)	Assignment (Hrs)	Independent Study (Hrs)	Practical (Hrs)	Total (Hrs)	Credits
1.	Management of Diseases – Anaesthesia and Critical Care Medicine	ANC500	Core	30	0	0	0	14	44	4.4
2.	Management of Diseases – Otorhinolaryngology (ENT)	ENT 500	Core	30	6	0	6	14	56	5.6
3.	Management of Diseases- Internal Medicine I	IM 500	Core	36	0	0	0	36	72	7.2
4.	Management of Diseases – Obstetrics and Gynaecology I	OG 500	Core	60	0	0	0	4	64	6.4

5.	Management of Diseases – Ophthalmology	OPT 500	Core	40	0	0	0	14	54	5.4
6.	Pathology III	PAT 500	Core	62	10	0	8	24	104	10.4
7.	Management of Diseases – Paediatrics and Child Health I	PD 500	Core	50	10	0	0	4	64	6.4
8.	Management of Diseases – Psychiatry and Mental Health I	PSY 500	Core	36	14	10	0	0	60	6.0
9.	Management of Diseases – Surgery/Orthopaedics and Trauma	SU 500	Core	123	0	0	2	13	138	13.8
Total				467	40	10	16	123	656	65.6

Semester 6 – Year 3 (Clerkship)

S/ N	Course Name	Course Code	Core/Elective	Lecture (Hrs)	Tutorial / Seminar (Hrs)	Assignment (Hrs)	Independent Study (Hrs)	Practical (Hrs)	Total (Hrs)	Credits
1	Communicable and non-communicable disease control	CD600	Core	45	45	8	8	85	191	19.1
2	Management of Diseases- Internal Medicine II	IM600	Core	46	0	0	0	51	97	9.7
3	Management of Diseases- Obstetrics and Gynaecology II	OG600	Core	47	0	0	0	50	97	9.7
4	Occupational Medicine	OM600	Core	28	2	6	0	6	42	4.2
5	Management of Diseases- Paediatric and Child Health II	PD600	Core	56	0	0	0	41	97	9.7

6	Management of Diseases- Psychiatry and Mental Health II	PSY600	Core	35	15	10	0	0	60	6.0
7	Radiology and Medical Imaging	RAD 600	Core	48	10	0	0	20	78	7.8
Total				305	72	24	8	253	662	66.2

Semester 7 and 8 – Year 4 (Clinical Rotation)

S/ N	Course Name	Course Code	Core/Elective	Lecture (Hrs)	Tutorial / Seminar (Hrs)	Assignment (Hrs)	Independent Study (Hrs)	Practical (Hrs)	Total (Hrs)	Credits
1	Emergency Medicine	EM800	Core	24	6	6	0	69	105	10.5

2	Otorhinolaryngology (ENT)	ENT800	Core	12	0	0	0	93	105	10.5
3	Forensic Medicine I	FM700	Core	17	6	2	17	0	42	4.2
4	Forensic Medicine II	FM800	Core	13	4	2	7	4	30	3.0
5	Internal Medicine	IM780	Core	15	16	16	14	464	525	52.5
6	Paediatrics and Child Health	PD780	Core	29	15	26	0	455	525	52.5
7	Psychiatry and Mental Health	PSY800	Core	15	18	10	0	237	280	28.0
Total				125	65	62	38	1322	1612	161.2

S/N	Course Name	Course Code	Core/Elective	Lecture (Hrs)	Tutorial/Seminar (Hrs)	Assignment (Hrs)	Independent Study (Hrs)	Practical (Hrs)	Total (Hrs)	Credits
-----	-------------	-------------	---------------	---------------	------------------------	------------------	-------------------------	-----------------	-------------	---------

8	Elective Period (During Breather; Credits Do Not Affect Length of Study)	EP800	Elective	0	0	0	0	120	120	12.0
Total Year 4 Hours and Credits									173 2	173.2

Semester 9 And 10 – Year 5 (Clinical Rotation)

S/ N	Course Name	Course Code	Core/Electiv e	Lectur e (Hrs)	Tutoria l/ Semina r (Hrs)	Assignmen t (Hrs)	Independe nt Study (Hrs)	Practic al (Hrs)	Total (Hrs)	Cred its
1	Anaesthesiology and Critical Care Medicine	ANC900	Core	5	0	0	0	100	105	10.5

2	Community Medicine	COM900	Core	2	2	3	0	168	175	17.5
3	Obstetrics and Gynaecology	OG900	Core	2	18	34	138	333	525	52.5
4	Ophthalmology	OPT900	Core	5	0	0	0	100	105	10.5
5	Orthopaedics, Traumatology and Neurosurgery	OT900	Core	6	5	0	0	59	70	7.0
6	Research Data Analysis and Reporting	RA900	Core	4	3	3	0	60	70	7.0
7	General Surgery	SU900	Core	10	10	4	130	301	455	45.5
Total				34	38	44	268	1121	1505	150.5

Total Hours for the MD Programme

Courses	Total Course s	Lectur e (Hrs)	Tutorial/ Se minar (Hrs)	Assignme nt (Hrs)	Independe nt Study (Hrs)	Practi cal (Hrs)	Total (Hrs)	Total Credits
Core Courses	54	2,240	465	290	503	3,778	7,276	727.6
Core and Elective Program me	55	2,240	465	290	503	3,898	7,396	739.6

NB: The total theory hours of the programme is 2,705 compared to 3,778 total practical hours of the programme in 5 years and if added with 120 hours of elective period total practical hours become 3898 which is 1: 1.4 ratio or 58% practical and 42% theory. Much of theory will be held in classrooms in the mornings after which the practice or clinical rotation will take the rest of the day including at night. While on a clinical rotation, the student will learn most of theoretical and practical material in the subject in which he/she is rotating. The relevant prescribed textbook is expected to be read thoroughly whilst rotating in that discipline.

6. ACADEMIC STAFF

Currently, Mwanza University comprises one School: School of Medicine and Allied Health Sciences, (SMAHS) with 13 Departments:

- Anatomy and Histology
- Pathology
- Physiology
- Biochemistry and Molecular Biology
- Behavioural Sciences and Public Health
- Communication Skills & ICT
- Microbiology and Immunology
- Parasitology and Entomology
- Clinical Pharmacology
- Internal Medicine and Psychiatry
- Obstetrics and Gynaecology
- Paediatrics and Child Health
- Surgery and Surgical Specialities

Tables 6.1 and 6.2 show a list of members of academic staff and their respective Departments/Units.

Table 6.1: Members of Academic Staff: Biomedical Sciences.

*** Contractual Hospital Staff; ** On Study Leave.**

S/N	Department	Head of Dept./Unit	Academic Staff
1	Anatomy and Histology	Dr. Dominic Marera – Senior Lecturer	1. Dr. Dominic Marera – Sen. Lecturer (BSc. Hum. Anat., MSc. Clinical Anat., PhD Clin. Anat.) 2. Dr. Erick Mazyala – Asst. Lecturer (DDS, MSc. Histol. & Cell Biol.) 3. Dr. Andrew Emmanuel Tito – Asst. Lecturer (BVM, MSc Anat) 4. Prof. Flora M. Fabian – Professor (DDS, PhD Anat.) 5. Atuganile Mwasunga – Asst. Lecturer (BSc Nurs, MSc Anat)
2	Pathology	Dr. Musoke Sharif - Lecturer	1. Dr. Musoke Sharif – Lecturer (MD, MMED Pathol.) 2. Dr. Maria Beda – T/Asst. (MD)**
3	Physiology	Dr. Eze D. Ejige – Senior Lecturer	1. Dr. Eze D. Ejige – Sen. Lecturer (BSc, MSc, PhD Human Physiol.) 2. Tuntufye Mwasanjobe – Asst. Lecturer (MD, MSc. Physiol.) 3. Dr. Oscar Mbembela – Asst. Lecturer (BVM, MSc. Physiol.)
4	Biochemistry & Molecular Biology	Dr. Justin Mokembo - Lecturer	1. Dr. Justin Mokembo - Lecturer (BSc. Biotechnol., MSc. Biotechnol., PhD Biochem. & Mol. Biol.) 2. Anselmo Manisha – Asst. Lecturer (BSc Mol. Biol, MSc. Biochem.) 3. Venance S. Mmbando – T/Asst. (BSc. Mol. Biol. & Biotechnol.)**
5	Behavioural Sciences and Public Health	Dr. Mwita Wambura – Lecturer	1. Dr Mwita Wambura – Lecturer (BSc Statistics, MSc Med. Stat. PhD Epid.) 2. Dr. Henock Ngonyani – Lecturer (MD, MPH) 3. Prof. Felix N. Kisanga – Assoc. Professor (MD, MPH, MSc. Trop. Med., PhD Pub. Health) 4. Dr. Ray M. Masumo – Lecturer (DDS, MPH, PhD Epidemiol. & Biostat.) 5. Dr. Kiyeti Hauli – Lecturer (MD, MMED Psych.)
6	Communication Skills and ICT	Dr. Beatrice S. Ndosi – Lecturer	1. Dr. Beatrice S. Ndosi – Lecturer (BA Ed., MA, PhD Mass Comm.) 2. Anael Kihunrwa (BSc Civil Eng. Creative Entrepr.)
7	Parasitology and	Dr. Jasper N. Ijumba – Senior Lecturer	1. Dr. Jasper N. Ijumba – Sen. Lecturer (BSc Ed., MSc. Med. Entomol., PhD Vector Parasitol.) 2. Jackline M. Lyimo – Asst. Lecturer (BSc Biol. MSc Med Parasitol. & Entomol.)

S/N	Department	Head of Dept./Unit	Academic Staff
	Entomology		
8	Microbiology and Immunology	Dr. Patrick Nyambega – Lecturer	1. Dr. Patrick Nyambega – Lecturer (BSc Microb, MSc App. Microb, PhD Microb.) 2. Mr. Phares L. Choto – Asst. Lecturer (BSc MB Biotch, MSc Clin. Microb. Diagn. MB) 3. Martha F. Mushi – Lecturer (BSc. Med Lab Sci., MSc Immunol. & Clinical Microbiol., PhD Clin. Microbiol.)
9	Clinical Pharmacology	Dr. Seth Monayo Mikaye- Lecturer	1. Dr. Seth Monayo Mikaye – Lecturer (BPharm, MSc in Pharma, PhD Pharm) 2. Prof. Elton Richard Kisanga – Professor (BPharm, MSc Med. Pharm, PhD in Pharmac.)

Table 6.2: Members of Academic Staff: Clinical Sciences: -* Contractual Hospital Staff, ** On Study Leave.

S/N	Department	Unit	Head of Dept./Unit	Staff Profile
1	Internal Medicine and Psychiatry	Internal Medicine	Prof. Joseph Mbatia – Assoc. Professor	1. Prof. Joseph Mbatia – Assoc. Professor (MD, MMED Psych.) 2. Dr. Kiyeti Hauli (MD, MMED Psych.) 3. Dr. Luzila J. Boshi – Lecturer (MD, MMED Int. Med. – Shiny. Reg. Ref. Hosp.) * 4. Dr. Oswin Mwemezi – Lecturer (MD, MMED Int. Med. – Sekou Toure Reg. Ref. Hosp.)* 5. Dr. Basangarufu Mwakyoma – TA (MD)**
2	Obstetrics and Gynaecology		Dr Lusako Mwaikasu – Lecturer (MD, MMED OBGY)	1. Dr Lusako Mwaikasu – Lecturer (MD, MMED OBGY) 2. Dr. Bernadin V. Ngaila – Lecturer (MD, MMED OBGY) 3. Dr Simon Kamuli – Lecturer (MD, MMED OBGY – Mara Reg. Ref. Hosp.)* 4. Dr Ernest Nkwabi – Lecturer (MD, MMED OBGY – Geita Reg. Ref. Hosp.)* 5. Dr. Augustino J. Maufi – Lecturer (MD, MMED OBGY – Shiny. Ref. Ref. Hosp.)* 6. Dr. Mfaume S. Kibwana – Lecturer (MD, MMED OBGY – Shiny. Reg. Ref. Hosp.)*
3	Paediatrics and Child Health		Dr Glory Joseph (MD, MMED Paed. Fellow Cardiol.)	1. Dr Glory Joseph (MD, MMED Paed., Fellow Cardiol.) 2. Dr. Tumaini Muhada – Lecturer (MD, MMED PCH) 3. Dr. Emmanuel Modestus – T/Asst. (MD)** 4. Dr. Nakiete S. Nachangu – Lecturer (MD, MMED Paed. – Sekou Toure Reg. Ref. Hosp.)* 5. Dr. Mwita C. Ngutunyi – Lecturer (MD, MMED PCH – Shiny. Reg. Ref. Hosp.)*
4	Surgery and Surgical Specialities		Dr. Joseph Mabula - Sen. Lecturer	1. Dr Joseph Mabula – Sen. Lecturer (MD, MMED Surg.) 2. Dr. Michael R. Matasha – Lecturer (MD, MMED Anaesth.) 3. Dr. Raphael Mwita – Lecturer (MD, MMED Surg.)* 4. Dr Joachim Eyembe– Lecturer (MBBS, MMED Surg. – Mara Reg. Ref. Hosp.) *

S/N	Department	Unit	Head of Dept./Unit	Staff Profile
				4. Dr Elias Godfrey – Lecturer (MD, MMED ORT – Mara Reg. Ref. Hosp.) *

7. LIFE AND FACILITIES AT THE UNIVERSITY

7.1 Accommodation

Students are accommodated in University Hostels within and outside the Campus. On-campus hostels are for first year and disabled students. The University does not provide accommodation for families. Nevertheless, a student is free to look for his own accommodation off-campus. All payments for accommodation are made in advance. Students who fail to pay accommodation fees are not allowed to sit for the University examinations.

7.2 Religious Life

Tanzania is a secular state. Therefore, students have freedom of religious worship as long as it is intended to promote students' welfare and encourage positive religious values, without disrupting other university core functions. Moreover, the activities should not cause noise pollution to other students and the University community at large. Permission and venue for such activities should be sought from the Head of Students Welfare.

7.3 Cafeteria Services

The University has outsourced catering services. Students are required to source for all their meals. Students in the University hostels are prohibited from any form of cooking.

7.4 Sports and Recreation

The Head of Students Welfare shall facilitate the formation of different students' sports teams such as netball, football, volleyball and others.

7.5 Students Administration, Welfare and Discipline

The Students' Bylaws for MzU are a guideline relating to life that fosters conducive teaching and learning environment and promote behaviour, values and attitudes acceptable for the targeted group and society.

The bylaws allow flexibility to accommodate different beliefs, values and professional backgrounds. Since the bylaws have been prepared to be user friendly, it is expected that the student of MzU will be reasonable to read, comprehend and implement the bylaws to their best satisfaction. Kindly note that the bylaws also explain the process for responding to allegations of student misconducts, students' rights and complaint procedure and direct on what actions MzU will take in dealing with violations of the bylaws.

The aim of the Students' Bylaws is to ensure, as far as is practicable and reasonable, that MzU strives to:

- a) Prepare students to be more responsible for their learning and future professionalism;
- b) Promote and protect human rights as individuals and as members in the society;
- c) Harmonise different beliefs and cultural norms including individual faith and values;
- d) Safeguard the scarce available resources;
- e) Promote gender equity when making judgments;
- f) Establish good governance and use of the law; and
- g) Reinforce discipline and promote acceptable student behaviours.

7.6 Bookshop and Stationery Services

The University will provide essential textbooks at a price. However, students who are able to procure the required books from elsewhere may do so. Stationery will also be available at the University Campus at a cost.



8. THE UNIVERSITY LIBRARY

The Mwanza University Library is managed by experienced and professional staff to provide services to support teaching and learning, e-books, and research at the University Library.

The University collection comprises printed reading materials such as books and periodicals, which are relevant and demand driven. It also includes electronic information resources and Internet facilities that include a range of electronic journals and health databases and websites in Medicine, Pharmacy, Nursing, Health Records and Medical Laboratory.

The Library has wireless internet service for other electronic equipment to access learning materials (Digital Library) to ensure staff and students are getting reliable internet all the time

8.1 The Library Opening Hours

The University Library will be open for its users on:

- Monday to Friday: 08.30 am - 09.00 pm
- Saturday: 09.00 am - 08.00 pm

The Library will be closed on Sunday and Public Holidays.

8.2 Electronic Library Materials

Electronic Library materials can be accessible any time all days (including Sunday and Public Holidays) through the Library Access Point. The password for this internet will be provided to all users through Library Noticeboard. Additionally, it can be reached from any point within the University.

9. ACADEMIC CALENDAR

9.1 Academic Calendar 2023-2024

Academic Year 2023 – 2024

- Starts on 23rd.10.2023
- Ends on 30th August.2024

Semester I

- Begins: 23rd.10.2023
- Ends: 29th.3.2024

Mid–Semester breather (Christmas breather): 20.12.2023 – 2.1.2024 (2 weeks)

End-of Semester University Examinations

- Start: 18th.3.2024
- End: 29th.3.2024

Inter-semester breather 30th.3.2024–7th.4.2024 (2 weeks)

Semester II

- Begins: 8th.4.2024
- Ends : 30th.8.2024

End of Semester university Examinations

- Start: 19th.8.2024
- End : 30th.8.2024

End of Year or Long Vacation:

- Starts: 1st.9.2024
- Ends: 25th.10.2024

Public Holidays

- 14/10/2023 – Nyerere Day
- 19/10/2023 – Maulid Day
- 9/12/2023 – Independence Day
- 25/12/2023 – Christmas Day
- 26/12/2023 – Boxing Day
- 1/1/20224 – New Year
- 12/1/2024 – Zanzibar Revolution
- 29th March 2024 – Good Friday
- 1st April 2024 – Easter Monday
- 7/4/2024 – Karume Day
- 10/4/2024 – Eid el Fitri
- 11th April 2024 – Eid el Fitri
-
-
- 26/4/2024 – Union Day
- 1/5/2024 – Workers Day
- 7/7/2024 – Sabasaba Day

- 10/7/2024 – Eid Al Adh
- 8/8/2024 – Nanenane Day